

XYZ export

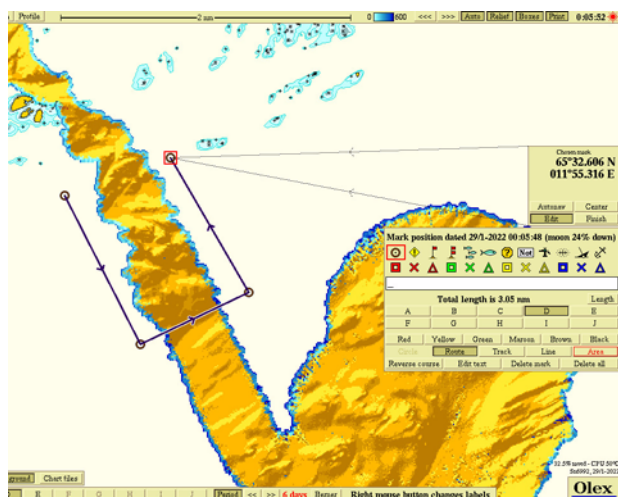
Self-measured seafloor data from Olex can be exported to other 3D-modeling systems using the **Export function**. This data contains depth values with corresponding GPS positions and are stored as a text file in ASCII format. Plotter data such as marks and line objects are not included in the XYZ-export.

The data are stored in a compressed file in “.gz” format.

Users who need to export seafloor data can access the function by adding a DX-nokkel in Olex.

Export of seafloor data limited by a defined area.

1. First create an area by drag and drop markers from the **Main menu line**.



2. Select **Area** in the **Chosen mark panel** to connect the start and end point to close the area. Then click **Export**. All self-measured seafloor data limited by the area will be compressed and stored in a “.gz -file.”

